

## Temporal variation of ambient particulate matter in Chattogram City, Bangladesh

Ahmad Kamruzzaman Majumder<sup>1</sup>, Abdullah Al Nayeem<sup>1,\*</sup>, Md Nasir Ahmmed Patoary<sup>1</sup>, William S. Carter<sup>2</sup>

<sup>1</sup> Center for Atmospheric Pollution Studies (CAPS), Department of Environmental Science, Stamford University Bangladesh, Dhaka-1209, Bangladesh

<sup>2</sup> The University of Findlay, College of Sciences, Department of Environmental Safety and Health Management, Ohio, USA

### ARTICLE INFORMATION

#### Article Chronology:

Received 15 January 2020

Revised 29 February 2020

Accepted 20 March 2020

Published 29 March 2020

#### Keywords:

Particulate matter; Seasonal variation; Ratio; Metrological characteristics

### CORRESPONDING AUTHOR:

nayeem@stamforduniversity.edu.bd

Tel: +8801815622852

Fax: +8801815622852

### ABSTRACT:

**Introduction:** Chattogram is known as the Bangladesh's commercial capital with its diversified industrial areas and seaport. This study aimed to assess the Particulate Matter (PM<sub>2.5</sub> and PM<sub>10</sub>) in relation to meteorological characteristics in Chattogram city from 2013-2018.

**Materials and methods:** Monthly PM<sub>2.5</sub> and PM<sub>10</sub> data were collected from the Continuous Air Monitoring Station (CAMS) in Chattogram City (Agrabad Point) which is operated by the Department of Environment (DoE) of Bangladesh under the Clean Air and Sustainable Environment (CASE) project.

**Results:** This Study found the higher concentration of both PM<sub>2.5</sub> and PM<sub>10</sub> occurred from December to February and it decreases from July-September and begins to increase from the month of October. The PM values seasonally varied being higher during the winter seasons and decreased in rainy seasons. The PM<sub>2.5</sub> mass was detected 50% of that of PM<sub>10</sub> which is mostly from biomass burn and vehicles activities. Meteorological parameters such as rainfall and humidity had strong inverse relation with both PM<sub>2.5</sub> and PM<sub>10</sub> over the years.

**Conclusion:** The Study found the average annual concentration of PM<sub>2.5</sub> was 5-6 times higher and PM<sub>10</sub> was 3 times higher than Bangladesh National Ambient Air Quality Standard (BNAQS) in Chattogram city over this six year period. It can be concluded that the air pollution in Dhaka city is deteriorating rapidly and it is high time to implement the clean air act urgently to reduce such destruction.

### Introduction

Ambient air pollution in urban areas is a major concern for many developing countries in the worldwide [1]. There are many sources including construction activities, brick kilns, vehicles, trash burning, open waste dumping, industrial emissions and road dust are responsible for air pollution in urban areas [2, 3]. These sources

contribute various air pollutants such as Sulfur dioxide (SO<sub>2</sub>), Nitrogen dioxide (NO<sub>2</sub>), Ozone (O<sub>3</sub>), Particulate Matte (PM<sub>2.5</sub> and PM<sub>10</sub>), Carbon Monoxide (CO) and Carbon dioxide (CO<sub>2</sub>). Among these pollutants PM<sub>2.5</sub> (an aerodynamic diameter of 2.5 μm or less) and PM<sub>10</sub> (an aerodynamic diameter of 10 μm or less) cause an adverse effect on human health [4]. Dhaka,

Chattogram, Narayanganj and other cities in Bangladesh have experienced some of the highest PM concentrations in the world [5-8]. Brick kilns and motor vehicles are the most common sources of fine particulate matter ( $\leq\text{PM}_{2.5}$ ) while construction activities and road dust generates the coarse particulate matter ( $\leq\text{PM}_{10}$ ) in urban areas of Bangladesh including Chattogram city [9]. Industrial zones are inside of this city which have potential threat to the overall air quality of Chattogram. The largely uncontrolled steel mills and some cement factories are located within commercial and residential areas, resulting in substantial PM exposure to the residents of those areas [5]. The Government of Bangladesh with the financial assistance from the World Bank has implemented the Clean Air and Sustainable Environment (CASE) project with a view to improve the air quality in the urban areas of the

country. This study reviewed the monitoring of PM from 2013 to 2018 in Chattogram city.

## Materials and methods

### Site descriptions

Chattogram city is situated between  $22^{\circ}14' - 22^{\circ}24'$  N Latitude and  $91^{\circ}46' - 91^{\circ}53'$  E Longitude on the right bank of Karnafuli river (Fig. 1). Old and worn out commercial vehicles travel the major road network from the port area northward towards the industrial areas [9]. Some recent development projects such as flyover, road construction and industrial projects are going on in this city. The CAMS is located at the CDA residential area near the "Hatekhary" School. The sampling inlets are placed on the flat roof of the CAMS shelter, about 7 m above the ground and the intake nozzle of the sampler is located 1.8 m above the roof with good natural ventilation [10].

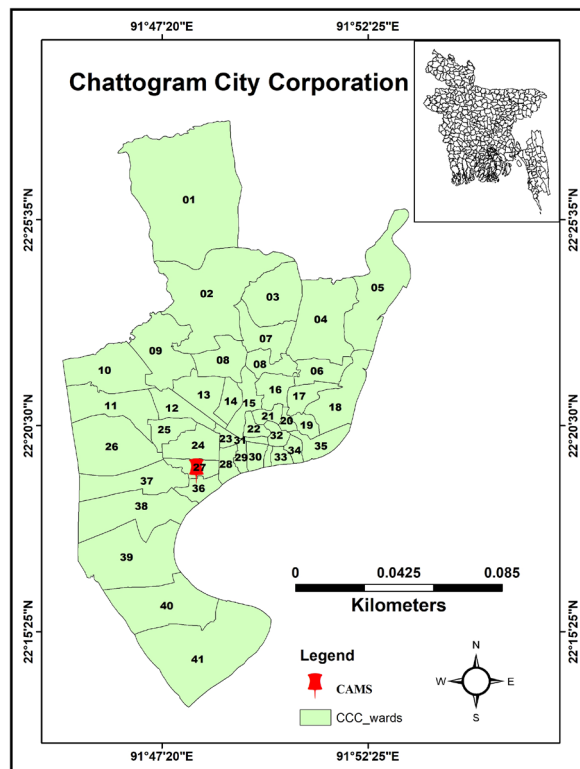


Fig. 1. Map of the study area

### Data collection and analysis

Average monthly PM and meteorological data were collected from CAMS-07 (Agrabad R/A, CDA, Chittagong) operated by Department of Environment (DoE) under the project of Clean Air and Sustainable Environment (CASE). The beta gauge instrument measures the volume of air extracted through the stack/duct for each sample interval and calculates mass concentration in the specified units (e.g.,  $\mu\text{g}/\text{m}^3$ ). More information on data collection procedures are available on the CASE website: <http://case.doe.gov.bd/>. All collected data was analyzed using the Statistical Package for Social Science (SPSS 20). Microsoft Excel was also used for data presentation as well as for making tables and graphs.

### Results and discussion

#### Monthly and Seasonal Concentration of Particulate Matter

The Average monthly concentration of  $\text{PM}_{2.5}$  and  $\text{PM}_{10}$  in Chattogram city are shown in Figs. 2 & 3. The monthly mean concentration (January>February>December>November) of both  $\text{PM}_{2.5}$  and  $\text{PM}_{10}$  exceeded the BNAAQS ( $\text{PM}_{2.5}$ :  $65 \mu\text{g}/\text{m}^3$ ,  $\text{PM}_{10}$ :  $150 \mu\text{g}/\text{m}^3$ ) for 24 h. This study found the higher concentration of both  $\text{PM}_{2.5}$  and  $\text{PM}_{10}$  oc-

curred from December to February. PM concentration decreases from July-September and begins to increase from the month of October. The  $\text{PM}_{2.5}$  concentration decreased in 2018 compared to previous years while  $\text{PM}_{10}$  has peaked in 2018. A number of construction activities have occurred over the past 3-4 years ago in this city which attributes to high concentration of coarse particles ( $\text{PM}_{10}$ ). It was shown in a study that about 40% of  $\text{PM}_{2.5-10}$  mass comes from soil dust including road dust in Chattogram city [5].

Annual mean concentration of  $\text{PM}_{2.5}$  found to be  $71 \mu\text{g}/\text{m}^3$ ,  $76.5 \mu\text{g}/\text{m}^3$ ,  $75.4 \mu\text{g}/\text{m}^3$ ,  $63.9 \mu\text{g}/\text{m}^3$ ,  $51.1 \mu\text{g}/\text{m}^3$  and  $57.2 \mu\text{g}/\text{m}^3$  from 2013-2018 respectively (Fig. 4) exceeding 3-4 times the NAAQS ( $15 \mu\text{g}/\text{m}^3$ ) and 5-6 times higher than World Health Organization (WHO) ( $10 \mu\text{g}/\text{m}^3$ ) standard. In addition,  $\text{PM}_{10}$  was  $123 \mu\text{g}/\text{m}^3$ ,  $128 \mu\text{g}/\text{m}^3$ ,  $117.3 \mu\text{g}/\text{m}^3$ ,  $113.4 \mu\text{g}/\text{m}^3$ ,  $119.6 \mu\text{g}/\text{m}^3$ ,  $164.4 \mu\text{g}/\text{m}^3$  from 2013-2018 respectively exceeding 2-3 times the BNAAQS and 5-6 times higher than WHO standard. It was found in a study that, yearly average  $\text{PM}_{10}$  and  $\text{PM}_{2.5}$  concentrations based on 2013 and 2014 scenario in Dhaka, Gazipur and Narayanganj city of Bangladesh were about three and six times higher than the national BNAAQS respectively [11].

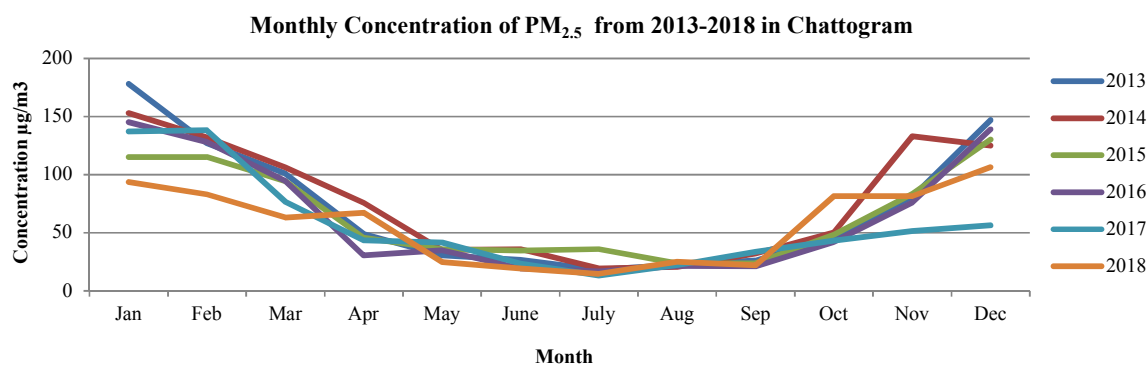


Fig. 2. Monthly Variation of  $\text{PM}_{2.5}$  from 2013-2018 in Chattogram City

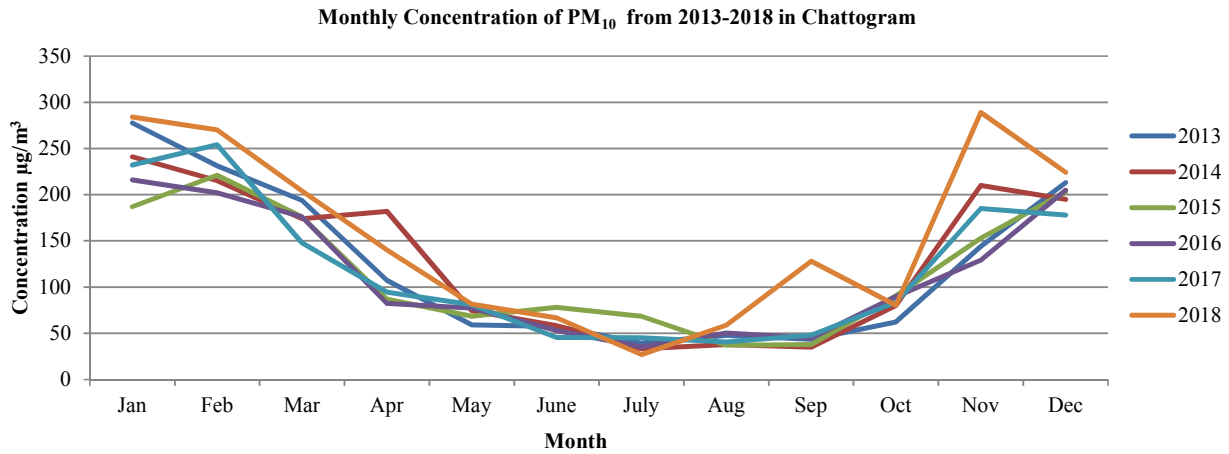


Fig. 3. Monthly variation of PM<sub>10</sub> from 2013-2018 in Chattogram City

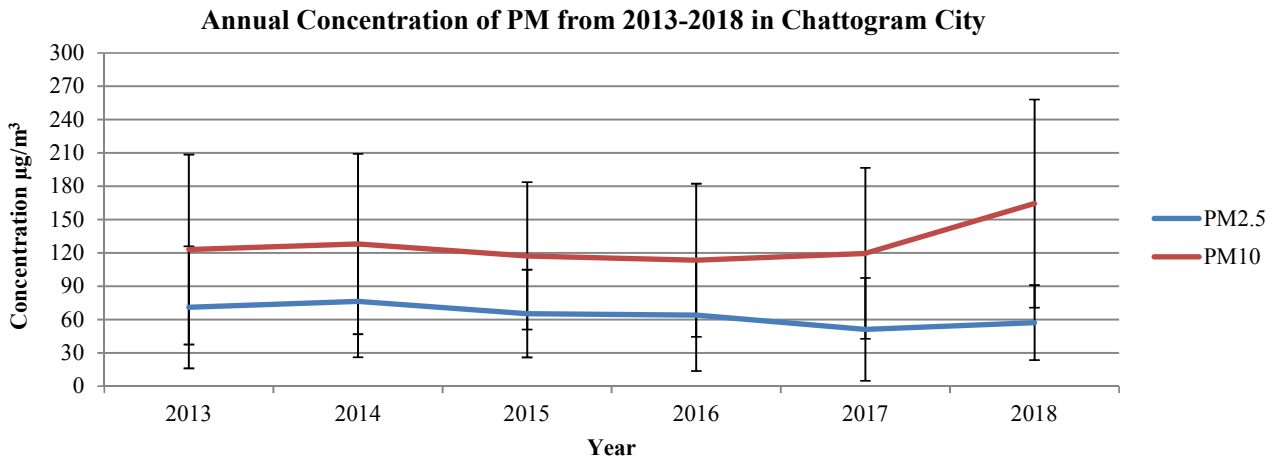


Fig. 4. Annual concentration of PM from 2013-2018 in Chattogram

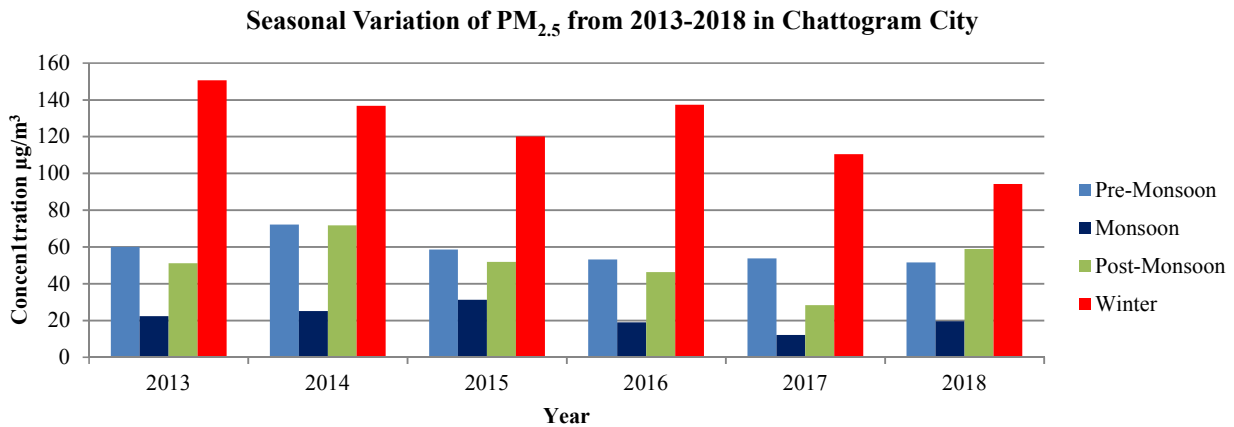


Fig. 5. Seasonal variation of PM<sub>2.5</sub> from 2013-2018 in Chattogram

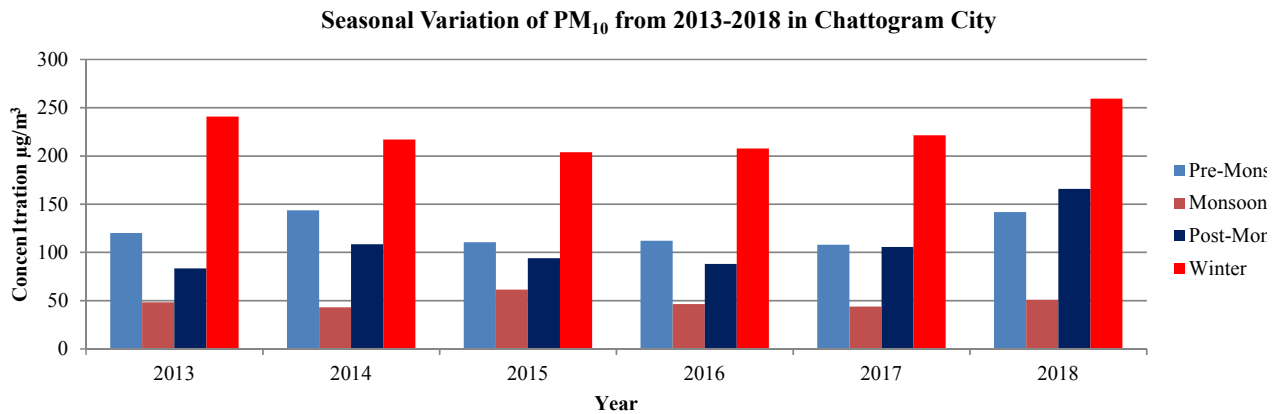


Fig. 6. Seasonal variation of PM<sub>10</sub> from 2013-2018 in Chattogram

When the rainfall and wind speed is high, especially in monsoon period, the concentration of PM<sub>2.5</sub> and PM<sub>10</sub> goes down [12]. Strong seasonal patterns were detected and the maximum concentration of PM was observed during winter time (Figs. 5 and 6). With the relatively low temperatures and low rainfall in winter and premonsoon, the mixing height becomes lower and the particulate matter is trapped nearer to ground level resulting to increase the PM concentration in the air. Besides, High emissions from brick kiln industries, vehicles emissions and road dust are thought to contribute to the increased PM concentrations especially in winter season [9]. Maximum concentration of PM<sub>2.5</sub> and PM<sub>10</sub> was found 150.6 µg/m<sup>3</sup> in 2013 and 259.4 µg/m<sup>3</sup> in 2018 respectively during the winter season. Study found the high peaks concentration of particulate matter during the winter are caused by seasonal fluctuations of the emissions and meteorological effects including wind direction and mixed layer heights [6].

#### **Relationship and mass ratio between PM<sub>2.5</sub> and PM<sub>10</sub>**

Fig. 7 showed the monthly PM<sub>10</sub> and PM<sub>2.5</sub> con-

centration are strongly correlated ( $R^2=0.88$ ) in Chattogram city over the 2013-2018. The result indicates that, fine particles and coarse particles are increased by parallel way over the year. Several studies in Bangladesh and abroad found the positive and strong relationship between the PM fractions [13-17]. Study has been found the positive relationship ( $R^2 = 0.82$ ) in Dhaka city during 2002-2005 [13].

The seasonal average PM ratio calculated to be 0.50 (Table 1). The highest ratio was observed in winter season (0.56) followed by the post-monsoon season (0.52). The lowest ratio was found during monsoon season (0.45) which indicates the influence of rainfall, wind direction, humidity and temperature. Fig. 8 shows that PM<sub>2.5</sub> fraction decreases during rainy months especially in April to August to 50% of that of PM<sub>10</sub> and increases during post monsoon and winter months. The major sources contributing to the coarse PM fraction are soil dust including suspended soil, road dust and construction activities combined account for 64% of the observed coarse mass in Chhattogram city [9]. In addition, brick kilns, old vehicles and biomass burning are found to be the major contributors for fine PM.

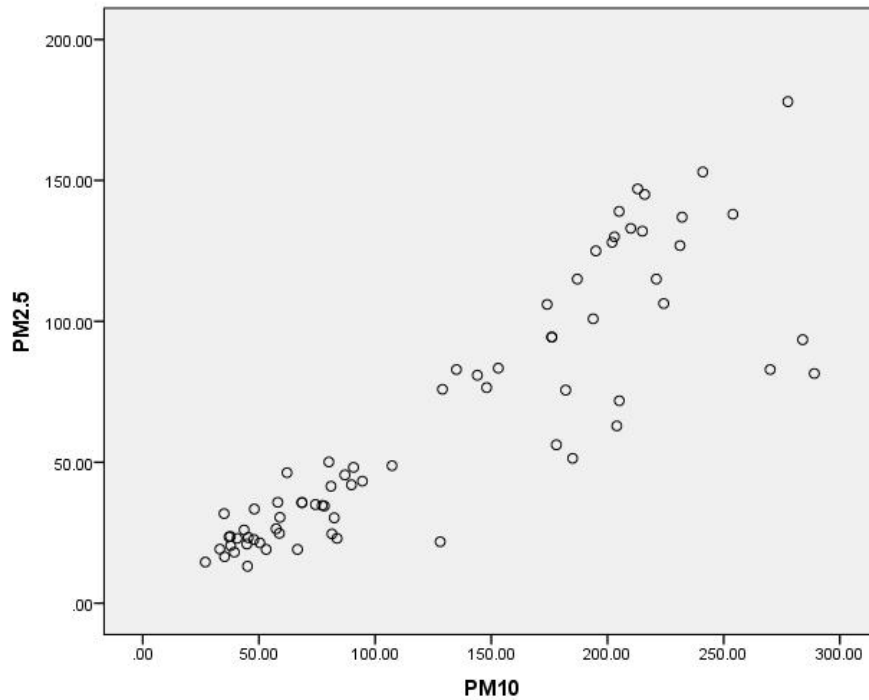


Fig. 7. Relationship between  $PM_{10}$  and  $PM_{2.5}$

Table 1. Particulate matter ratio in different season since 2013-2018 in Chattogram City

Season	$PM_{2.5}/PM_{10}$	STD
Pre-Monsoon (March-May)	0.47	0.08563
Monsoon (June-September)	0.45	0.14723
Post-Monsoon (October-November)	0.52	0.21743
Winter (December-February)	0.56	0.12531
<b>Total (2013-2018)</b>	<b>0.50</b>	<b>0.15519</b>

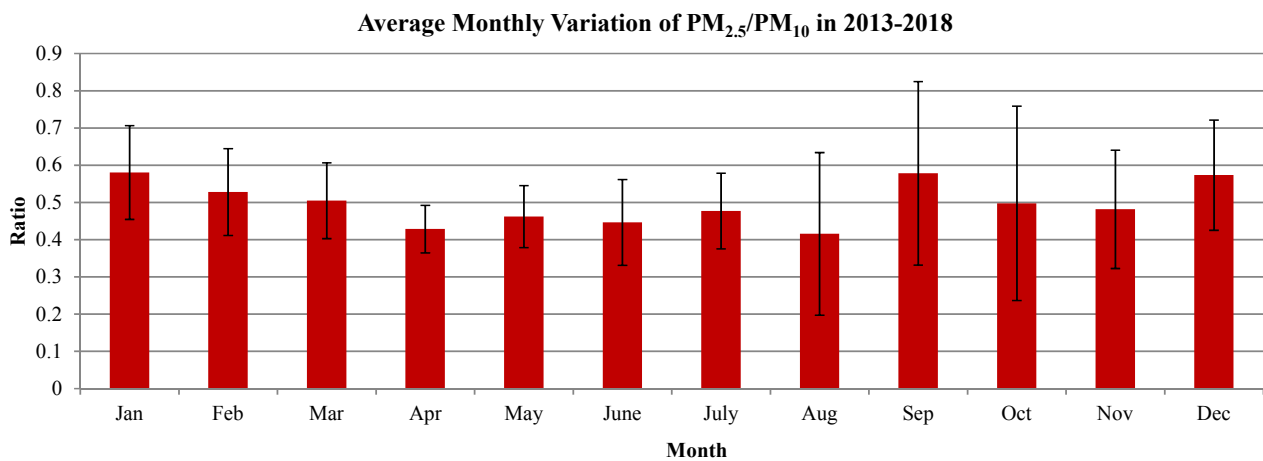


Fig. 8. Ratio between  $PM_{10}$  and  $PM_{2.5}$  in Chattogram City

### Correlation between PM and meteorological parameters

Table 2 indicates the correlation between PM and meteorological parameters from 2013-2018. It was observed that, both PM<sub>2.5</sub> and PM<sub>10</sub> had the strongly inverse relationship with humidity. That means when the annual average humidity rate increases the concentration of particles decrease. The temperature has an influence on humidity in atmosphere. This study also found the strongly negative relationship among temperature and particles. Besides, rainfall always attributes to combat the pollution level from atmosphere especially in monsoon season. This study observed the same results though in the year of

2015 the relation was not significantly strong with PM. Fig. 9 presented the seasonal relationship between PM and Meteorological parameters in Chattogram city. Humidity, temperature and rainfall have also the seasonal influence and it shows the all selected parameters had negative relation with different seasons. It indicates that, when the humidity and temperature increases especially in monsoon seasons the particles concentration decreases significantly. In addition, monsoon seasons had the highest rainfall rate which also contributes to drop the particles concentration. Eventually, winter seasons had the highest concentration of PM due to low temperature, humidity and rainfall rate.

Table 2. Correlation with PM and meteorological parameters

Year		PM <sub>2.5</sub>	PM <sub>10</sub>	Humidity	Temp.	Rainfall	
2013	PM <sub>2.5</sub>	Pearson Correlation	1	.982**	-.802**	-.947**	-.691*
		Sig. (2-tailed)		.000	.002	.000	.013
	PM <sub>10</sub>	Pearson Correlation	.982**	1	-.874**	-.884**	-.723**
		Sig. (2-tailed)	.000		.000	.000	.008
2014	PM <sub>2.5</sub>	Pearson Correlation	1	.972**	-.909**	-.850**	-.622*
		Sig. (2-tailed)		.000	.000	.000	.031
	PM <sub>10</sub>	Pearson Correlation	.972**	1	-.920**	-.742**	-.646*
		Sig. (2-tailed)	.000		.000	.006	.023
2015	PM <sub>2.5</sub>	Pearson Correlation	1	.983**	-.729**	-.928**	-.575
		Sig. (2-tailed)		.000	.007	.000	.050
	PM <sub>10</sub>	Pearson Correlation	.983**	1	-.780**	-.879**	-.567
		Sig. (2-tailed)	.000		.003	.000	.055
2016	PM <sub>2.5</sub>	Pearson Correlation	1	.988**	-.808**	-.919**	-.767**
		Sig. (2-tailed)		.000	.001	.000	.004
	PM <sub>10</sub>	Pearson Correlation	.988**	1	-.879**	-.868**	-.822**
		Sig. (2-tailed)	.000		.000	.000	.001
2017	PM <sub>2.5</sub>	Pearson Correlation	1	.904**	-.948**	-.802**	-.658*
		Sig. (2-tailed)		.000	.000	.002	.020
	PM <sub>10</sub>	Pearson Correlation	.904**	1	-.929**	-.886**	-.807**
		Sig. (2-tailed)	.000		.000	.000	.002
2018	PM <sub>2.5</sub>	Pearson Correlation	1	.866**	-.879**	-.845	-.765**
		Sig. (2-tailed)		.000	.000	.001	.004
	PM <sub>10</sub>	Pearson Correlation	.866**	1	-.948**	-.824	-.882**
		Sig. (2-tailed)	.000		.000	.001	.000

\*\* . Correlation is significant at the 0.01 level (2-tailed).

\* . Correlation is significant at the 0.05 level (2-tailed).

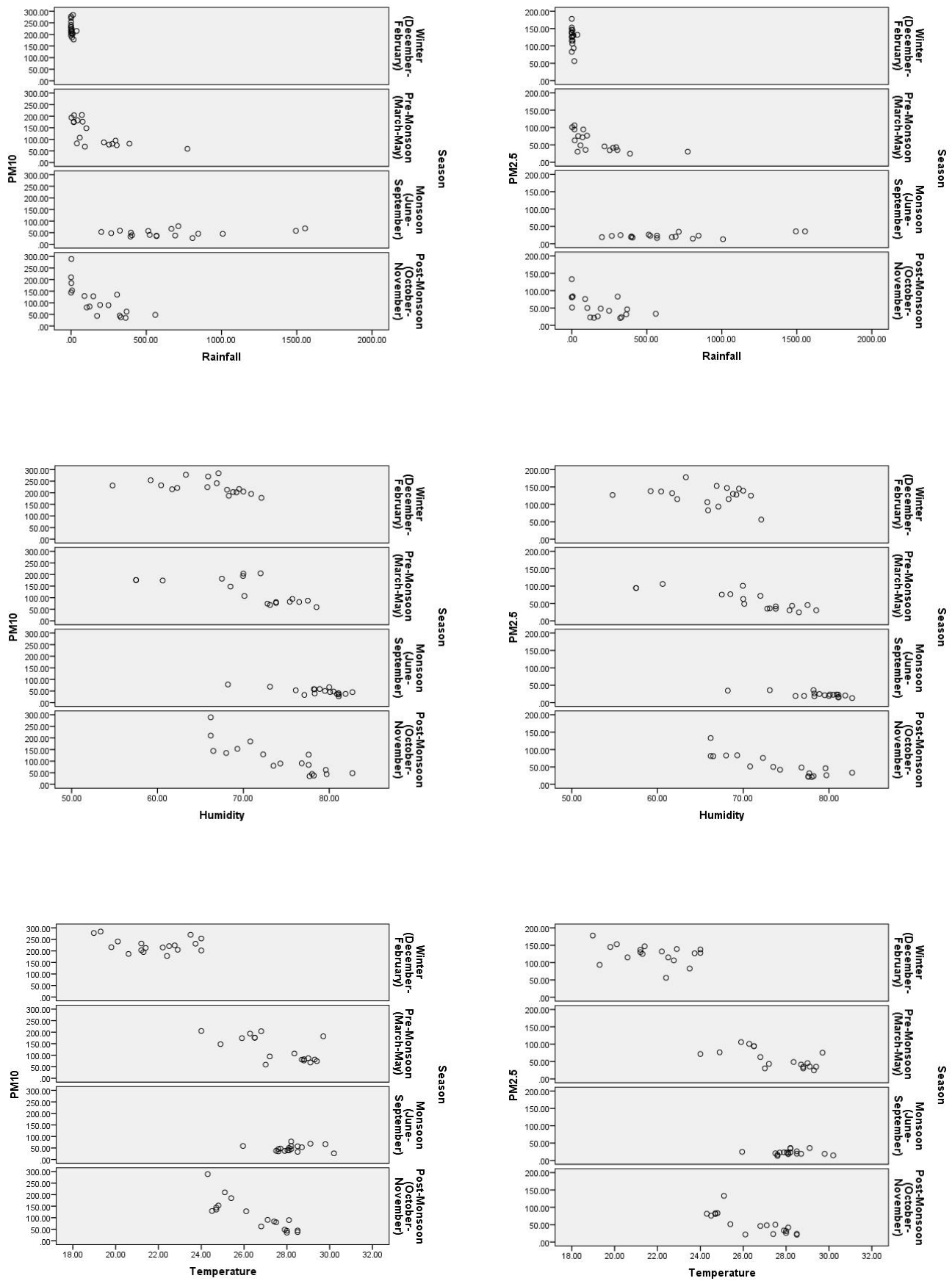


Fig. 9. Seasonal relation between PM and Meteorological parameters



## Conclusion

Chattogram City is experiencing enormous problems due to worst air pollution.  $PM_{10}$  concentration gradually increased since 2013 to 2018 while the major contributing sources of this coarse particle in Chattogram city are construction activities, vehicles emission and road dust [9]. However,  $PM_{2.5}$  has decreased in 2017 compared to previous year though it increases again in 2018. Both seasonal  $PM_{10}$  and  $PM_{2.5}$  concentration were below or close to BNAAQS and WHO standard during the monsoon season whereas it exceeded during rest of the season in a year. The Study denotes a relationship between  $PM_{10}$  and  $PM_{2.5}$  in Chattogram city for the years of 2013-2018. Average  $PM_{2.5}/PM_{10}$  ratio were .50 which indicates that,  $PM_{2.5}$  mass was detected 50% of that of  $PM_{10}$  in Chattogram city. Improvement of public transport system and upgradation of mass transportation may contribute to combat air pollution in Chattogram city as because a number old vehicles largely contribute to declined overall air pollution in Chattogram city. Enforcing the existing regulations and policies, such as the ban of traditional high polluting kilns or alternative use of fire brick such as sand brick could be effective steps to reducing the air pollution in Chattogram city. In addition, Government of Bangladesh should implement the clean air act as early as possible to combat this pollution.

## Financial supports

This study was supported by Center for Atmospheric Pollution Studies (CAPS).

## Competing interests

The authors declare no competing interests.

## Acknowledgements

The authors are thankful to Department of Environment (DoE), Ministry of Environment, Forest and Climate Change, People's Republic of Bangladesh.

## Ethical considerations

Ethical issues have been completely observed by the authors.

## Reference

1. Tabaku, A, Bejtja G, Bala S, Toci E, Resuli J. Effects of air pollution on children's pulmonary health. *Atmospheric Environment*. 2011. 45(40): 7540-7545.
2. Hossain, MM, Majumder AK, Hossain MS, Nayeem AA. Study on Ambient Particulate Matter ( $PM_{2.5}$ ) with Different Mode of Transportation in Dhaka City. *American Journal of Pure and Applied Bioscience*. 2019. 1(4):12-19.
3. Al Nayeem A, Hossain MS, Majumder AK, Carter WS. Spatiotemporal Variation of Brick Kilns and its relation to Ground-level  $PM_{2.5}$  through MODIS Image at Dhaka District, Bangladesh. *International Journal of Environmental Pollution and Environmental Modeling*. 2019. 2(5): 277-284.
4. Li X, Chen X, Yuan X, Zeng, G, Leon, T, Liang J, Chen G, Yuan X. Characteristics of particulate pollution ( $PM_{2.5}$  and  $PM_{10}$ ) and their spacescale-dependent relationships with meteorological elements in China. *Sustainability*. 2017. 9(12): 2330.
5. Begum BA, Biswas SK, Nasiruddin M. Source identification of Chittagong aerosol by receptor modeling. *Environmental Engineering Science*. 2009. 26(3): 679-689.
6. Begum BA, Hopke PK. Ambient air quality in Dhaka Bangladesh over two decades: Impacts of policy on air quality. *Aerosol Air Qual. Res*. 2018. 18: 1910-1920.
7. WHO. Who's Ambient (outdoor) air pollution database - update 2016. World Health Organization, Geneva. [http://www.who.int/phe/health\\_topics/outdoor air/data-bases/cities/en/](http://www.who.int/phe/health_topics/outdoor_air/databases/cities/en/), Last Access: 12 April 2018.
8. Mahmood A, Hu Y, Nasreen S, Hopke PK. Airborne Particulate Pollution Measured in Bangladesh from 2014 to 2017. *Aerosol and Air Quality Research*. 2019. 19: 272-281.
9. Begum BA, Biswas SK, Nasiruddin M. Characterization of Chittagong Aerosol by PCA Modeling. *Journal of Bangladesh Academy of Sciences*. 2012. 36(1): 19-31.
10. Department of Environment (DoE) (2019), Ambient Air Quality in Bangladesh. <http://case.doe.gov.bd>.
11. Rana MM, Sulaiman N, Sivertsen B, Khan MF, Nasreen S. Trends in atmospheric particulate matter in Dhaka,

- Bangladesh, and the vicinity. *Environmental Science and Pollution Research*. 2016. 23(17): 17393-17403.
12. Hossen MA, Hoque A. Variation of Ambient air Quality Scenario in Chittagong City : A Case Study of Air Pollution. *Journal of Civil, Construction and Environmental Engineering*. 2016.
  13. Rouf MA, Nasiruddin M, Hossain AM, Islam MS. Trend of Particulate Matter PM2.5 and PM10 in Dhaka City. *Bangladesh Journal of Scientific and Industrial Research*. 2011. 46(3): 389-398.
  14. Janssen NA, Fischer P, Marra M, Ameling C, Cassee FR. Short-term effects of PM2.5, PM10 and PM2.5-10 on daily mortality in Netherlands. *Science of the Total Environment*. 2013 Oct 1;463:20-6.
  15. Kocak M, Mihalopoulos N, Kubilay N. Chemical composition of the fine and coarse fraction of aerosols in the north eastern Mediterranean. *Atmospheric Environment*. 2007 Nov 1;41(34):7351-68.
  16. Shon ZH, Kim KH, Song SK, Chae YZ, Park CG, Jung K. Fractionation of secondary organic carbon in aerosol in relation to the traffic borne emission of semi volatile organic compounds. *Atmospheric Environment*. 2012 Apr 1;50:225-33.
  17. Salam A, Hossain T, Siddique MNA, Alam, AMS. Characteristics of atmospheric trace gases, particulate matter, and heavy metal pollution in Dhaka, Bangladesh, *Air Quality, Atmosphere and Health*. 2008 Oct 1;1(2):101.